

Anchor[®]



Boho
Style
belt



[AnchorCrafts.com](https://www.AnchorCrafts.com)

   @anchorcrafting

Designed by Stefanie Binder

Design No.: 0022440-AC50003-AD

Mez Needlecraft GmbH, 2023. All Rights Reserved.



Anchor Cotton 'n' Wool 50g art. N° 4670004 - *(colour n°)

Intermediate



100 cm length

A = 1x *00404
B = 1x *00105

4 mm

MILWARD



N° 18

MILWARD

EXTRAS:

Buckle A: 40 x 60 cm

Buckle B: 40 x 40 cm

Boho Style belt

ABBREVIATIONS:**st(s)** | stitch(es)**dc** double crochet**ch** chain**sl st** slip stitch**tr** treble crochet**dtr** double treble crochet**tog** together**rep** repeat

dtr-group | dtr4tog, crochet 2x 2 dtrs each in one stitch point - Distance between them are 3 tr of the previous row, for each additional dtr-group within a row, the insertion point for the 1st and 2nd dtr is in the same row as the previous dtr-group.

PATTERN:**VERSION A:****TENSION:**

15 M x 6 R = 7 cm x 10 cm

Crochet around buckle with dc, cut thread and sew.

Row 1: Crochet 14 dc evenly distributed around the bar. Total 14 sts.**Row 2:** 3 ch (= 1 tr), 14 tr over sts of previous row. Total 15 sts.**Row 3:** 4 ch (= 1 dtr), 2 ch, 1 dtr-group (explanation in the abbreviations section), 3 ch, 1 dtr-group, 3 ch, 1 dtr-group, 2 ch, 1 dtr. Total 15 sts.**Row 4:** 3 ch (= 1 tr), 14 tr. Total 15 sts.

rep row 3+4 until you reached your desired length. End with a row 3, crochet the following two rows before finishing your work.

Row 5: 3 ch (= 1 tr), 2x tr2tog, 5 tr, 2x tr2tog, 1 tr. Total 11 sts.**Row 6:** 1 ch, 11 sl st. Total 11 sts.

Cut and sew the thread.

VERSION B:**TENSION:**

10 M x 8 R = 5 cm x 10 cm

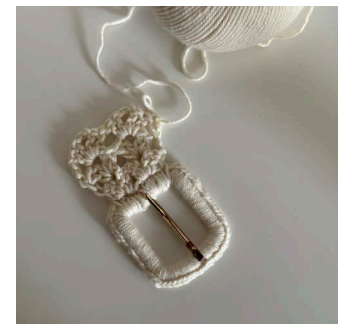
Crochet around buckle with dc, cut thread and sew.

Row 1: Crochet 9 dc evenly distributed around the bar. Total 9 sts.**Row 2:** 2 ch, 2 tr in second st, 2 ch, 2 tr in third st, skip 2 sts, 2 tr in 6th st, 2 ch, 2 tr in 7th st, skip 1 st, 1 dc in 9th st. Total 10 sts.**Row 3:** 3 ch (=1 tr), 2 tr + 2 ch + 2 tr in first chain space, 2 tr + 2 ch + 2 tr in second chain space, 1 dc in second ch of previous row. Total 10 sts.**Row 4:** 3 ch (=1 tr), 2 tr + 2 ch + 2 tr in first chain space, 2 tr + 2 ch + 2 tr in second chain space, 1 dc in third ch of previous row. Total 10 sts.

Repeat row 4 until the desired length is reached. Finally crochet the following 2 rows.

Row 5: 3 ch (= 1 tr), 1 tr, skip 1 st, 2 dc in chain space, skip 1 st, 2 tr, skip 1 st, 2 dc in chain space, skip 1 st, 1 tr, 1 tr in third chain of previous row. Total 10 sts.**Row 6:** 1 ch, 10 sl st. Total 10 sts.

Cut and sew the thread.

**WASHING ADVICE**

- Always wash in as warm a water temperature as possible - up to the temperature recommended, with a short spin. Use a lot of water if hand washing. For darker colours we recommend the use of discolouration sheets.
- Do not bleach.
- Do not tumble dry. Drip-dry on a horizontal surface.
- Iron at a medium temperature using a damp cloth.
- Professional dry cleaning in tetrachloroethylene.
- Do not use optical brighteners (or any detergent containing optical brighteners).