

Anchor[®]



Chloe
Shawl



Designed by André de Castro

AnchorCrafts.com

Design No.: 0022440-AC50002-AD

   @anchorcrafting

Mez Needlecraft GmbH, 2023. All Rights Reserved.





Anchor Cotton 'n' Wool 50g art. N° 4670004 - *(colour n°)

Intermediate



48 x 152 cm



4x *00188



One pair 3.75 mm circular needles with 80 cm cable.



N° 18

EXTRAS:
4 stitch markers

Chloe Shawl

GAUGE:

18 st and 26 rows = 10 x 10 cm in st st with 3.75 mm, after blocking.

ABBREVIATIONS:

pm place marker

sm slip marker

RS right side

WS wrong side

K knit

P purl

St(s) Stitch(es)

Rnd round

Yo yarn over

SSK slip 1 stitch as if to knit, slip another stitch as if to knit, pass both stitches back to the left needle with the new orientation and knit them together through the back loop - decrease 1st.

k2tog knit 2 sts together

CDD central double decrease

CONSTRUCTION:

This pattern is a shawl with a semi-circular shape, it is constructed starting at the neck and knit down towards the edge. The 2 initial and final sts of each row are worked in garter stitch to form the side edges. The increases are made on the RS in the centre spine and along the edges, and on the WS along the edges only.

NOTES FOR READING THE CHARTS:

- Odd rows are read from right to left and even rows are read from left to right.
- In chart A all sts are shown (including the centre st and the 2 edge sts)
- In chart B there is no longer a central st.

INSTRUCTIONS

"GARTER TAB" CAST ON

With 3.75 mm needles, cast on 3 sts.

Knit 6 rows, turn the work 90° and pick up and knit 3 sts on the side, turn the work again 90° and pick up and knit 3 sts in the cast on.

9 total sts

SHAWL BODY IN STOCKINETTE STICH

Pre row (WS): k2, pm, yo, purl until the last sts, yo, pm, k2. (11 total sts)

Row 1 (RS): k2, sm, yo, k3, yo, pm, k1 (central st), pm, yo, knit until last marker, yo, sm, k2. (15 total sts)

Row 2 (WS): k2, sm, yo, purl until the last marker, yo, sm, k2. (17 total sts)

Row 3 (RS): k2, sm, yo, knit until next marker, yo, sm, k1 (central st), sm, yo, knit until last marker, yo, sm, k2. (21 total sts)

Row 4 (WS): k2, sm, yo, purl until the last marker, yo, sm, k2. (23 total sts)

Repeat rows 3 and 4 until you have a total of 107 sts (including the central st and the border sts)

107 total sts

CHART A

Work now from chart A and repeat the rows 1 to 8 only once.

131 total sts

BODY IN STOCKINETTE STICH CONTINUATION:

Repeat rows 3 and 4 of from the previous section "Shawl body in Stockinette Stich

" you will have a total of 215 sts (including the central st and the border sts)

215 total sts

CHART B

Work now from chart b and repeat the rows 1 to 12 a total of 4 times.

327 total sts

BIND OFF

K1, *k1, place the 2 sts back to left hand needle and knit them together through the back loops, repeat from * until the end.

FINISHING

Soak the shawl in lukewarm water with a wool detergent and leave it to soak for 20/30 min. Remove and rinse with clean water, without wringing.

Wrap the shawl in a bath towel and squeeze it to remove excess water.

Next, place the shawl on a flat surface and block it with the help of pins to stretch the lace, paying special attention to the tips of the final edge.

Leave to dry.

MEASUREMENTS

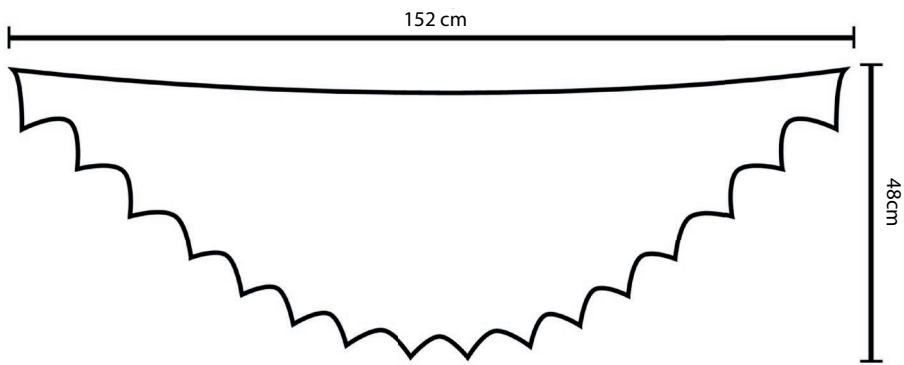


CHART A

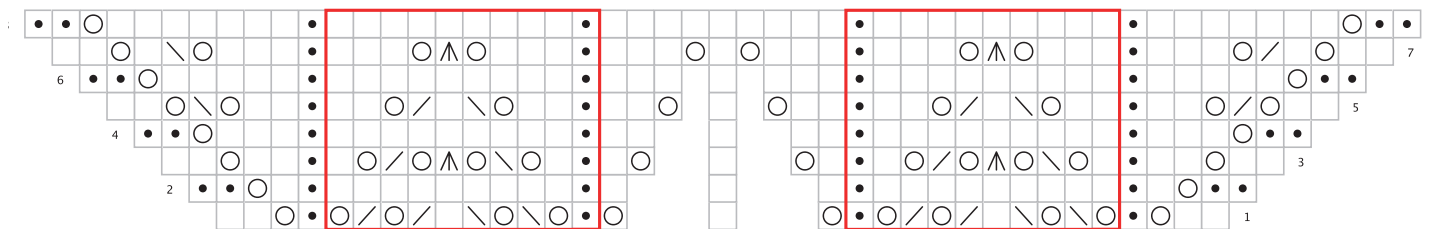
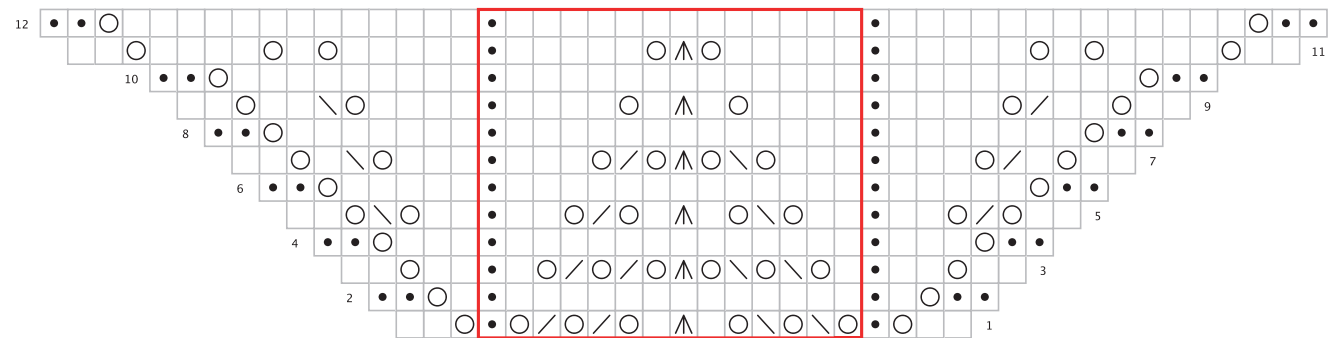


CHART B



KEY

-  RS: K
WS: P
-  RS: P
WS: K
-  yo
-  SSK
-  K2tog
-  CDD
-  Repeat

WASHING ADVICE

- Always wash in as warm a water temperature as possible - up to the temperature recommended, with a short spin. Use a lot of water if hand washing. For darker colours we recommend the use of discolouration sheets.
- Do not bleach.
- Do not tumble dry. Drip-dry on a horizontal surface.
- Iron at a medium temperature using a damp cloth.
- Professional dry cleaning in tetrachloroethylene.
- Do not use optical brighteners (or any detergent containing optical brighteners).