

Anchor[®]



Rose Garden Sweater



AnchorCrafts.com

   @anchorcrafting

Designed by André de Castro

Design No.: 0022434-00001-08

Mez Needlecraft GmbH, 2023. All Rights Reserved.



Anchor Cotton 'n' Wool 50 g Art. N° 4670004 - *(colour n°)

Expert



S	(M)	L	(XL)	XXL	(XXXL)
89.5	(98)	103	(114)	124	(134.5)
16.5	(17)	18	(20)	21.5	(23)

Actual bust size (cm)
Yoke Depth (cm)



6 x	(7x)	8x	(9x)	10x	(11x)	*00895 (A)
1x	(1x)	2x	(2x)	2x	(3x)	*00105 (B)

EXTRAS:
Stitch markers



One pair of circular needles 3,5 mm with 80 cm cable
(or n° required to obtain gauge)



N° 18

Rose Garden Sweater

GAUGE:

23 sts e 34 rows = 10 x 10 cm in stockinette stitch with 3,5mm needles, in the round after blocking

Note: It is imperative to obtain the number of stitches indicated in the tension, or the sweater will not have the correct final measures. If necessary, go up or down a needle size to obtain desire gauge.

ABREVIATIONS:

pm place marker
sm slip marker
m1R with right needle pick up the thread between the two stitches from back to front and knit the stitch from the front.
m1L with right needle pick up the thread between the two stitches from front to back and knit through the back loop.
St(s) Stitch(es)
Rnd round
K knit
RS right side
WS wrong side
P purl
Inc increase
dec decrease
k2tog knit 2 stitches together
ktbl knit through the back loop

SHORT ROWS "WRAP & TURN" TO "WRAP & TURN"

On RS: knit until last stitch before turn, slip the next stitch to right needle without knit it (the stitches are always slipped purlwise) place the yarn in front of work, slip the stitch again to left needle. Turn the work to WS, place the yarn in front of work to purl. When purl the next stitch pull the yarn a little in order to tighten the stitch that was wrapped.

On WS: Work until last stitch before turn, slip the next stitch to right needle without knit it (the stitches are always slipped purlwise) place the yarn to back of the work, place again the stitch to left needle. Turn the work to RS and place the yarn back to knit the stitches. When knit the next stitch pull the yarn a little in order to tighten the stitch that was wrapped.

To "unwrap" the stitch:

Work until the wrapped stitch (stich with yarn around), insert the right needle into the "wrap" from bottom to top and at the same time into the corresponding stitch, knit as a k2tog.

INSTRUCTIONS

YOKE

With yarn colour A,, and 3,5 mm needles with an 80 cm cable, cast on 108 (114) 120 (130) 142 (154) sts. Join to work in the round, carefully, to not twist the stitches. Place marker to indicate the beginning of the round.

YOKE RIBBING

Rnd 1: * ktbl, p1* repeat from *to* until end of the round. Repeat round 1 until rib measures 3 cm (aprox 10 rounds).

Increase round: *k2, m1L* repeat from *to* until end of the round. 162 (171) 180 (195) 213 (231) sts.
Knit 1 round.

SHAPPING NECKLINE

Rnd 1 (RS): k 48 (51) 54 (58) 64 (69), wrap & turn.

Rnd 2 (WS): P until m, sm, p 48 (51) 54 (58) 64 (69) wrap & turn.

Rnd 3 (RS): K until wrapped sts, "unwrap" the stitch, k4 wrap & turn.

Rnd 4 (WS): P until wrapped sts, "unwrap" the stitch, p4 wrap & turn.

Repeat rnd 3 and 4, two more times.

Next Rnd: k until the end the of the round closing all "wraps" as they appear. K 3 (3) 4 (6) 10 (12) rnds

SIZE S:

Inc rnd: k1, (m1L, k3) 53 times, m1L, k2. 216 sts

SIZES M, L, XL, XXL AND XXXL:

Inc. rnd: K 0 (1) 1 (1) 1 (1) , [m1L, K 0 (2) 3 (2) 2 (4)], 0 (9) 18 (15) 6 (3) times, [m1L, k 0 (3) 2 (3) 3 (3)], 0 (22) 17 (22) 31 (34) times, [m1L, k 0 (2) 3 (2) 2 (4)], 0 (9) 18 (15) 6 (3) times, [m1L, K 0 (3) 2 (3) 3 (3)], 0 (22) 18 (22) 31 (34) times, m1L, k 0 (2) 1 (2) 2 (2).

216 (234) 252 (270) 288 (306) sts.

ALL SIZES:

Next rnd: K all stitches. Join yarn colour B, work rnds 1 to 35 from Yoke chart, 12 (13) 14 (15) 16 (17) chart repeats all around.

264 (286) 308 (330) 352 (374) sts.

Cut yarn colour B and continues only with yarn colour A.

Next Rnd: Knit all sts.

SIZES S, M, L, XL AND XXL:

Inc rnd: k 9 (7) 26 (14) 9 (0), [m1L, k 19 (15) 51 (27) 17 (0)], 6 (3) 2 (3) 4 (0) times, [m1L, k 18 (14) 52 (28) 18 (0)], 1 (13) 1 (5) 11 (0) times [m1L, k 19 (15) 51 (27) 17 (0)], 6 (3) 2 (3) 4 (0) times, m1L, K9 (7) 26 (14) 9 (0).

278 (306) 314 (342) 372 sts.

SIZE XXXL ONLY:

k5, (m1L, k 11) 33 times, m1L, k6. 408 sts.

ALL SIZES:

Work in stockinette stitch 3 (4) 4 (7) 10 (12) rnds.

SEPARATE BODY AND SLEEVES

K 44 (49) 51 (56) 61 (66), place on hold next 50 (54) 54 (58) 64 (72) sts in waste yarn for the right sleeve. Cable cast on 12 (12) 14 (16) 18 (20) sts form armhole, k 89 (99) 103 (113) 122 (132) place on hold next 50 (54) 54 (58) 64 (72) sts in waste yarn for the left sleeve. Cable cast on 12 (12) 14 (16) 18 (20) sts form armhole, k until end of the round. 202 (222) 234 (258) 280 (304) sts on needles for the body.

BODY

Work in the round, always in stockinette stitch until body measures 33 cm or until 3 cm less the desired measure.

RIBBING

Rnd 1: * ktbl, p1* repeat from *to* until end of the round. Repeat round 1 until rib measures 3 cm (aprox 10 rounds). Bind off all sts in pattern.

SLEEVES

With colour A, 3,5mm needles with 80 cm cable, with RS facing you and in the center of armhole, pick and knit 6 (6) 7 (8) 9 (10) sts, k next 50 (54) 54 (58) 64 (72) on hold, pick and knit 6 (6) 7 (8) 9 (10) sts. 62 (66) 68 (74) 82 (92) sts total. Place marker and join to work in the round using "magic loop" or other method of your preference. Knit for 2,5 cm.

Dec round: k1, ssk, k until 3 sts before m, sm, k2tog, k1 (2 sts decreased) Repeat the decrease round more 5 (5) 6 (7) 11 (15) times, every 26st (26st) 22nd (19st) 12th (9th) rnd. 50 (54) 54 (58) 58 (60) sts.

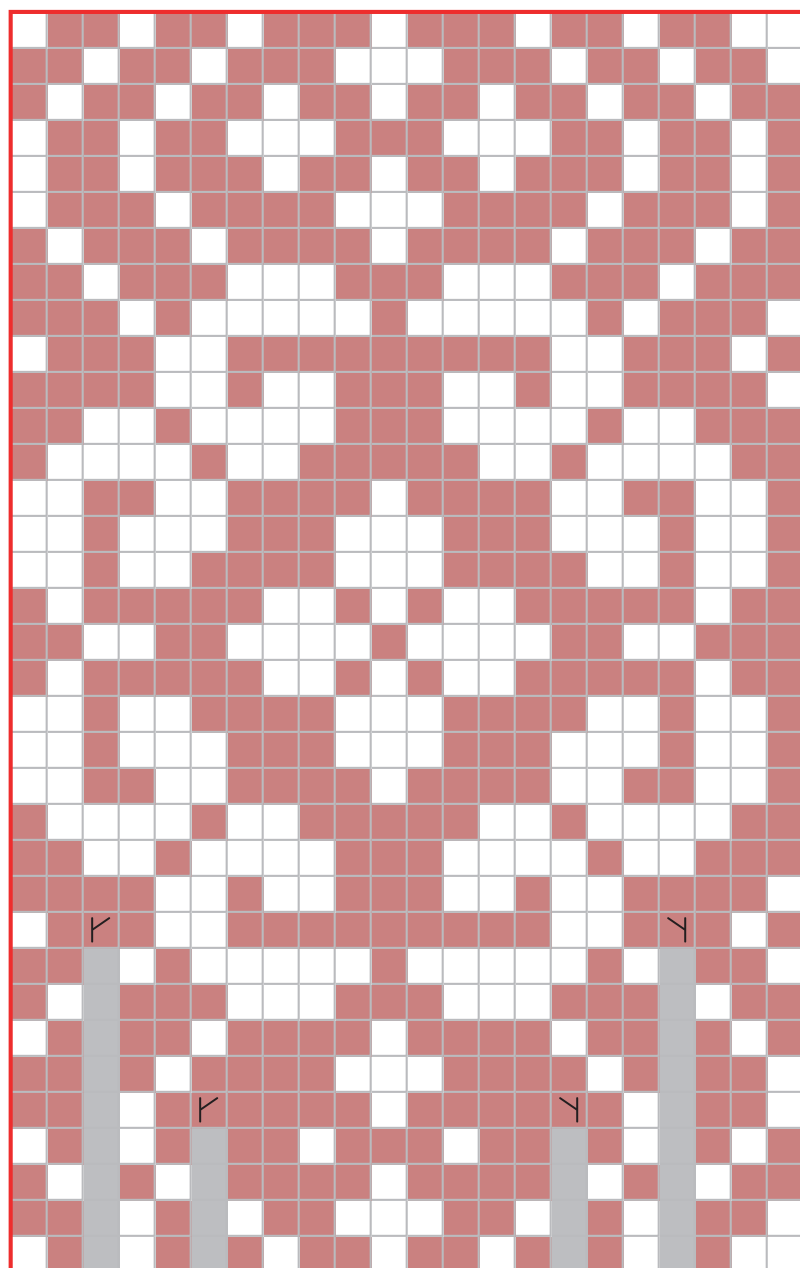
RIBBING

Rnd 1: * ktbl, p1* repeat from *to* until end of the round. Repeat round 1 until rib measures 3 cm (aprox 10 rounds). Bind off all stitches in pattern.

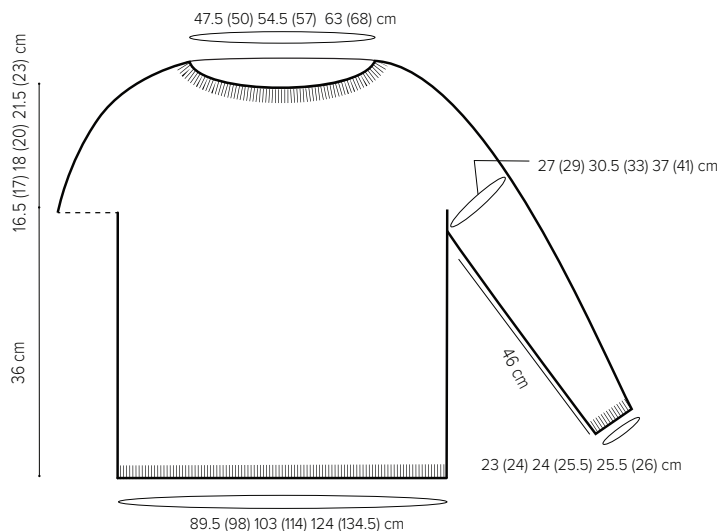
FINISHING:

Weave off all ends. Block the sweater into the final measures.

CHART A



MEASUREMENTS



KEY

- colour A
- colour B
- Y M1L
- Y M1R
- no stitch
- Repeat

WASHING ADVICE

- Always wash in as warm a water temperature as possible up to the temperature recommended, with a short spin.
- Use a lot of water if hand washing. For darker colours we recommend the use of discolouration sheets.
- Do not bleach.
- Do not tumble dry. Drip-dry on a horizontal surface.
- Steam at distance and iron at low temperature.
- Professional dry cleaning in tetrachloroethylene.
- Do not use optical brighteners (or any detergent containing optical brighteners).